

FLOOR	SKIRTING
1.0	2.0
3.0	4.0
WALL	CEILING

FINISHES SCHEDULE

1.0 FLOOR:

- 1.1. Terrazzo finish including skirting
- 1.2. Insitu concrete troweled smooth with cement: Sand screed

2.0 SKIRTING:

- 2.1. 100mm high Terrazzo skirting
- 2.2. 100mm high Sand skirting

3.0 WALL FINISH:

- 3.1. 25 mm thick smooth plaster finish with one coat plaster primer and 3 coats silk vinyl approved paint
- 3.2. Ceramic wall tiles up to 2100mm height
- 3.3. Ceramic wall Tiles

4.0 CEILING:

- 4.1. gypsum board ceiling with vinyl finish
- 4.2. Sodomatt ceiling paint on 12mm thick plaster on slab

PROJECT MANAGERS

CreationsConsult
africa ltd
architects • engineers • project managers
PLOT 2B NAKASERO HILL ROAD,
KAMPALA
TEL: 0414-232717, FAX: 0414-232719
e-mail: frontdesk@creationsconsult.org
www.creationsconsult.org

Notes

1. All Dimensions are in millimetres unless stated otherwise.
2. Do not scale the drawings. In case of any discrepancy, consult the Architect.
3. All External Walls are 230mm, including plaster.
4. Refer to notes for finishes and details.
5. These Drawings are to be read in conjunction with other specialists drawings.

Date

Sign

CONTRACT

**CONSULTANCY SERVICES FOR THE DEVELOPMENT OF
DETAILED DESIGNS AND TENDER DOCUMENTS FOR
CONSTRUCTION OF SELECTED HEALTH FACILITIES LOT 1**

Job Title

**DEVELOPMENT OF DETAILED DESIGNS AND TENDER
DOCUMENTS FOR CONSTRUCTION OF HEALTH CENTRE IV**

Drawn by
ABAAYO EVAS
Checked by
MATOYA MARORIA

Date: July-2012

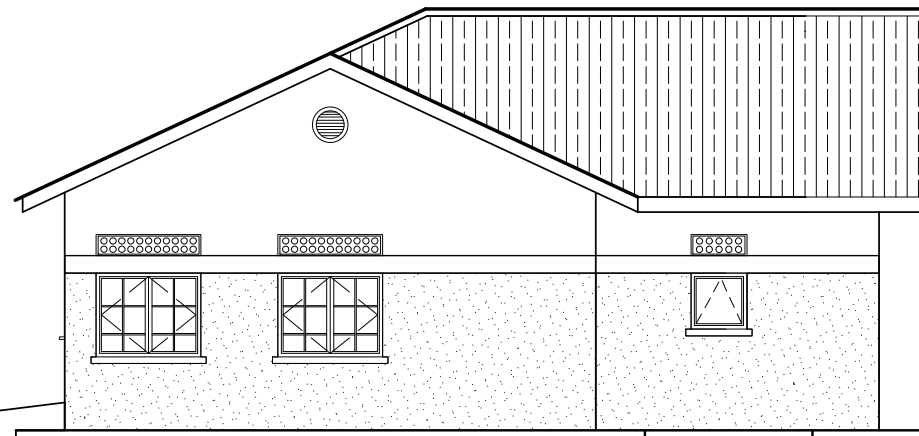
Date: July-2012

Job No.
CCAL/2011-234

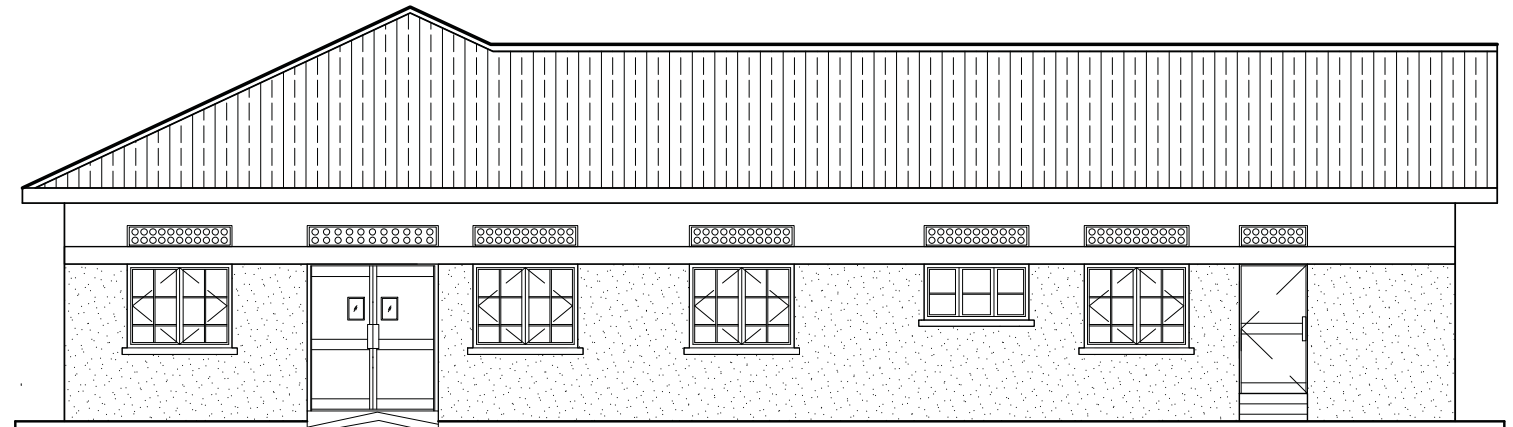
Sheet No:
HCIV-THEATRE/A.501

Drawing Scale

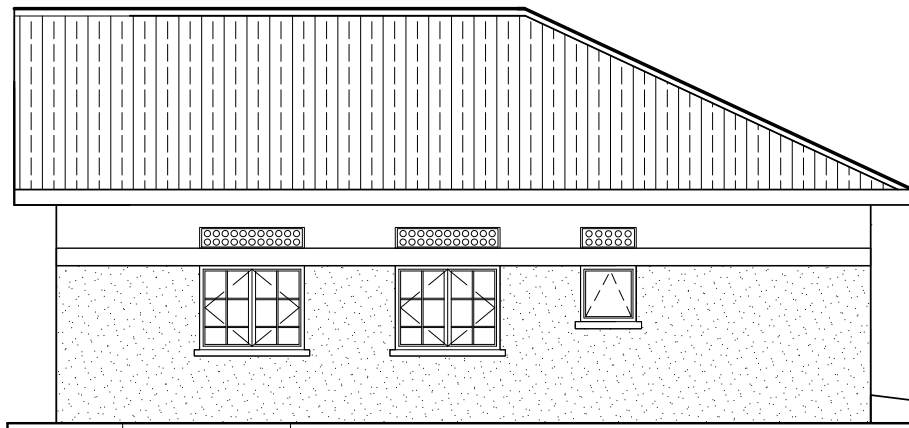
JULY 2012



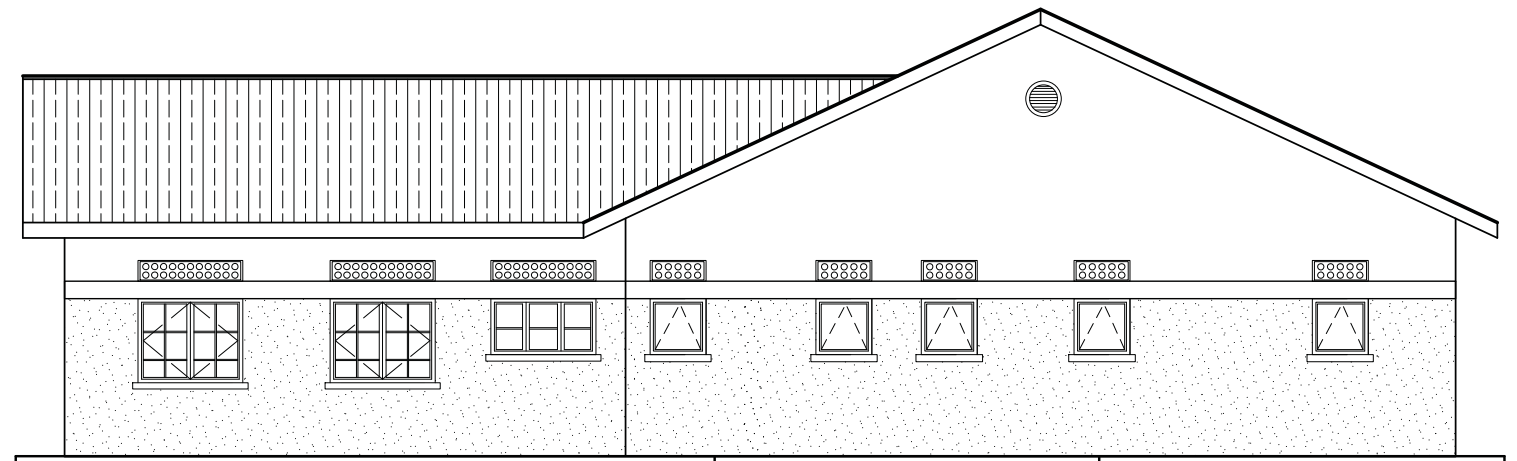

ELEVATION 03
 HC IV THEATRE SCALE 1:100




ELEVATION 02
 HC IV THEATRE SCALE 1:100




ELEVATION 04
 HC IV THEATRE SCALE 1:100




ELEVATION 01
 HC IV THEATRE SCALE 1:100

PROJECT MANAGERS


CreationsConsult
 africa ltd
architects • engineers • project managers
 PLOT 2B NAKASERO HILL ROAD,
 KAMPALA
 TEL: 0414-232717, FAX: 0414-232719
 e-mail: frontdesk@creationsconsult.org
www.creationsconsult.org

Notes

Notes

1. All Dimensions are in millimetres unless stated otherwise.
2. Do not scale the drawings. In case of any discrepancy, consult the Architect.
3. All External Walls are 230mm, including plaster.
4. Refer to notes for finishes and details.
5. These Drawings are to be read in conjunction with other specialists drawings.

CONTRACT

**CONSULTANCY SERVICES FOR THE DEVELOPMENT OF
 DETAILED DESIGNS AND TENDER DOCUMENTS FOR
 CONSTRUCTION OF SELECTED HEALTH FACILITIES LOT 1**

Job Title

**DEVELOPMENT OF DETAILED DESIGNS AND TENDER
 DOCUMENTS FOR CONSTRUCTION OF HEALTH CENTRE IV**

Drawn by

ABAAYO EVAS

Checked by

MATOYA MARORIA

Date: July-2012

Date: July-2012

Job No.

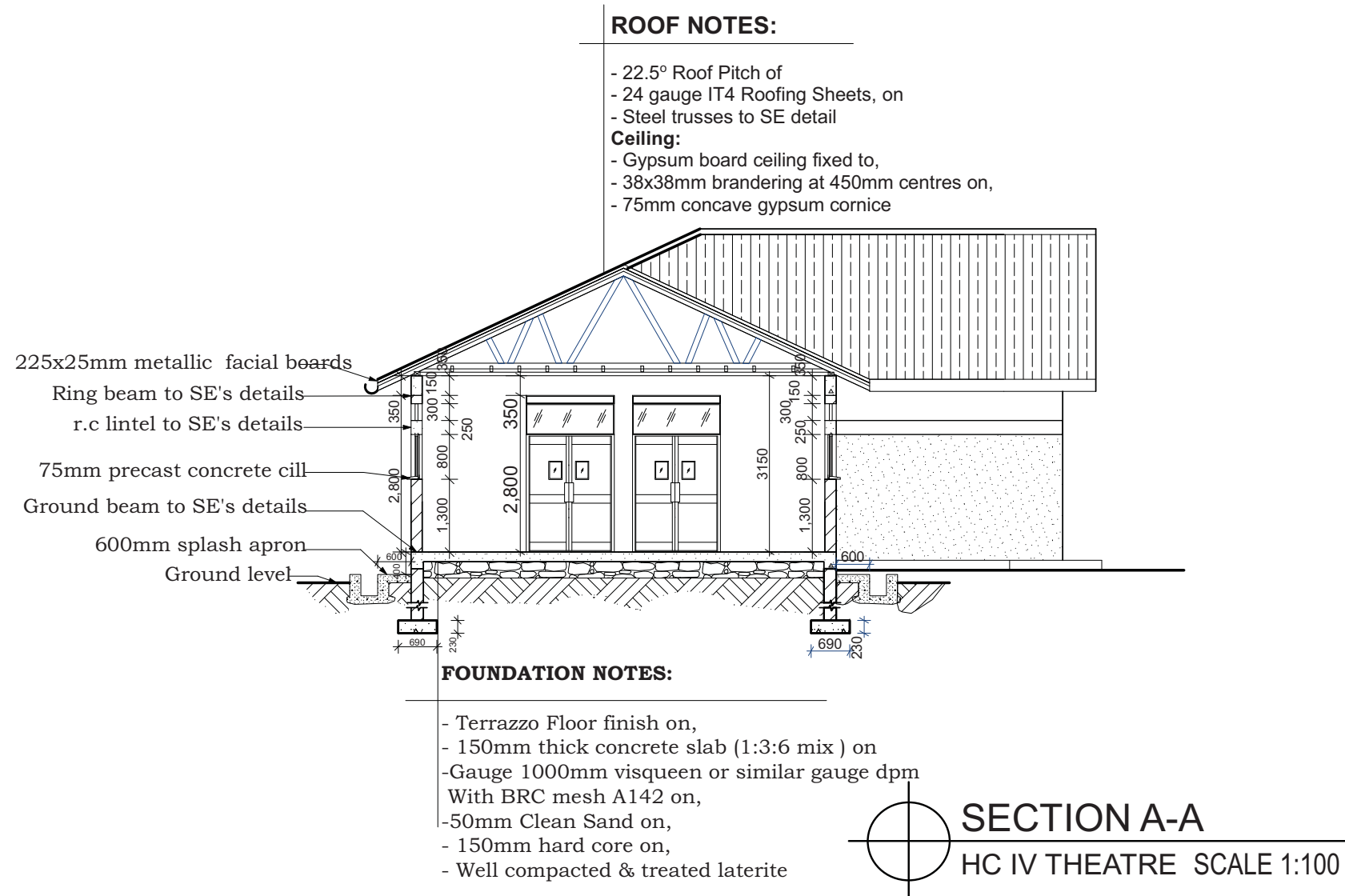
CCAL/2011-234

Sheet No:

HCIV-THEATRE/A.502

Drawing Scale

JULY 2012



PROJECT MANAGERS

CreationsConsult
africa ltd
architects • engineers • project managers
PLOT 2B NAKASERO HILL ROAD,
KAMPALA
TEL: 0414-232717, FAX: 0414-232719
e-mail: frontdesk@creationsconsult.org
www.creationsconsult.org

Notes	Date	Sign

Notes

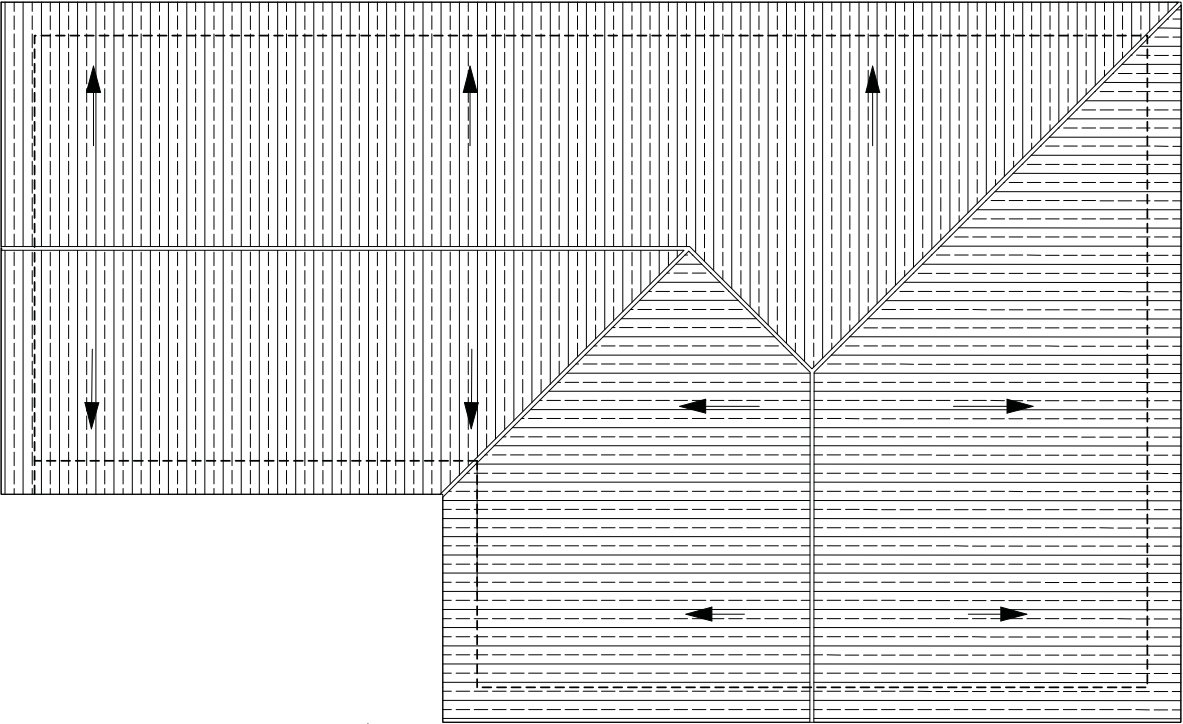
1. All Dimensions are in millimetres unless stated otherwise.
2. Do not scale the drawings. In case of any discrepancy, consult the Architect.
3. All External Walls are 230mm, including plaster.
4. Refer to notes for finishes and details.
5. These Drawings are to be read in conjunction with other specialists drawings.

CONTRACT
**CONSULTANCY SERVICES FOR THE DEVELOPMENT OF
DETAILED DESIGNS AND TENDER DOCUMENTS FOR
CONSTRUCTION OF SELECTED HEALTH FACILITIES LOT 1**


Job Title
**DEVELOPMENT OF DETAILED DESIGNS AND TENDER
DOCUMENTS FOR CONSTRUCTION OF HEALTH CENTRE IV**

Drawn by ABAAYO EVAS	Date: July-2012
Checked by MATOYA MARORIA	Date: July-2012
Job No. CCAL/2011-234	Sheet No: HCIV-THEATRE/A.503
Drawing Scale	

JULY 2012



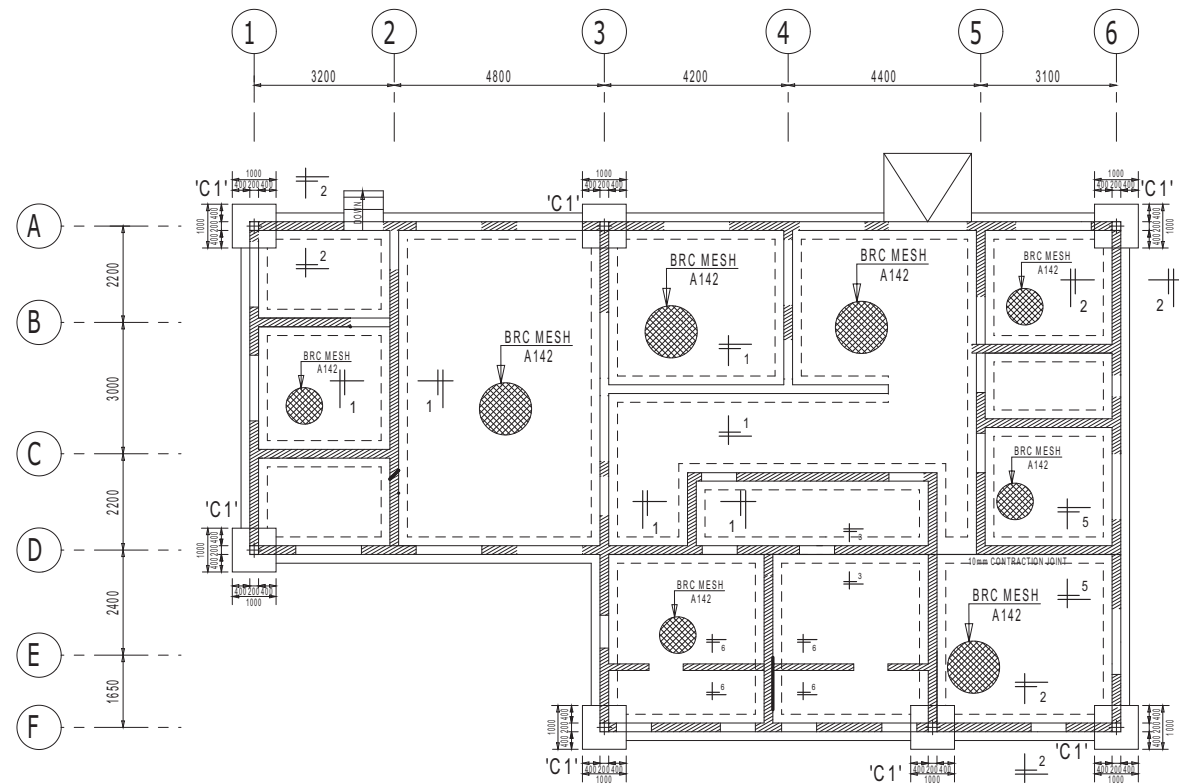
 **ROOF PLAN**
HC IV THEATRE 1:100

<div>PROJECT MANAGERS</div> <div> CreationsConsult a f r i c a l t d <small>architects • engineers • project managers</small> PLOT 2B NAKASERO HILL ROAD, KAMPALA TEL: 0414-232717, FAX: 0414-232719 e-mail: frontdesk@creationsconsult.org www.creationsconsult.org</div>	Notes	Date	Sign	CONTRACT	Drawn by ABAAYO EVAS	Date: July-2012	JULY 2012	
				CONSULTANCY SERVICES FOR THE DEVELOPMENT OF DETAILED DESIGNS AND TENDER DOCUMENTS FOR CONSTRUCTION OF SELECTED HEALTH FACILITIES LOT 1	Checked by MATOYA MARORIA	Date: July-2012		
	Notes				Job Title	Job No. CCAL/2011-234	Sheet No: HCIV-THEATRE/A.504	
	1. All Dimensions are in millimetres unless stated otherwise. 2. Do not scale the drawings. In case of any discrepancy, consult the Architect. 3. All External Walls are 230mm, including plaster. 4. Refer to notes for finishes and details. 5. These Drawings are to be read in conjunction with other specialists drawings.				DEVELOPMENT OF DETAILED DESIGNS AND TENDER DOCUMENTS FOR CONSTRUCTION OF HEALTH CENTRE IV	Drawing Scale		

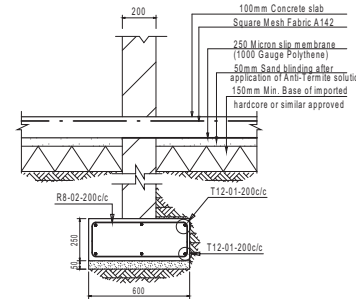
HC IV THEATRE-DOOR SCHEDULE (Scale 1:100)						
Mark	D 01 PVO	D 02	D 03 PVO	D 04	D 05 PVO	D 06
Elevation						
Plan						
Remarks	Solid core mahogany veneered flush door with vision panel on purpose made aluminium frames	Steel casement doors complete with glazing	Solid core mahogany veneered flush door on purpose made aluminium frames	Standard framed and battened door on purpose made Aluminium frames.	Solid core mahogany veneered flush door on purpose made aluminium frames	Steel casement door.
Quantity	03	01	06	05	02	01
Location	Ante/recovery room, Anaesthetist Discharge	Entrance Lobby	Sister in charge, Anaesthetist, Surgeon, Store, Sterile, Sterilisation, Sluice room.	Toilets and showers.	Change/Rest rooms	Sluice Room

HC IV THEATRE-WINDOW SCHEDULE (Scale 1:50)				
Mark	W 01 SH 900	W 02 SH 900	W 03 SH 1300	W 04 SH 1300
Elevation				
Plan				
Remarks	Standard steel casement (Sill height 900mm)	Standard steel casement fixed window (Sill height 900mm)	Obscured glass window steel csement (Sill height 1300mm)	Standard steel casement window (Sill height 1300mm)
Quantity	11	01	02	07
Location	All rooms apart from rest rooms	Duty station	Operating room	Toilets, showers and store.

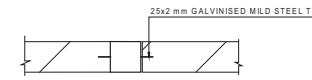
PROJECT MANAGERS CreationsConsult africa ltd architects • engineers • project managers PLOT 2B NAKASERO HILL ROAD, KAMPALA TEL: 0414-232717, FAX: 0414-232719 e-mail: frontdesk@creationsconsult.org www.creationsconsult.org	Notes	Date	Sign	CONTRACT CONSULTANCY SERVICES FOR THE DEVELOPMENT OF DETAILED DESIGNS AND TENDER DOCUMENTS FOR CONSTRUCTION OF SELECTED HEALTH FACILITIES LOT 1 DEVELOPMENT OF DETAILED DESIGNS AND TENDER DOCUMENTS FOR CONSTRUCTION OF HEALTH CENTRE IV	Drawn by ABAAYO EVAS Checked by MATOYA MARORIA	Date: July-2012 Date: July-2012	JULY 2012
	Notes				Job No. CCAL/2011-234	Sheet No: HCIV-THEATRE/A.505	
	Notes				Drawing Scale		
	Notes						



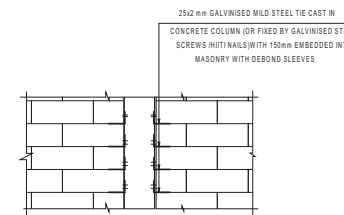
GROUND FLOOR PLAN



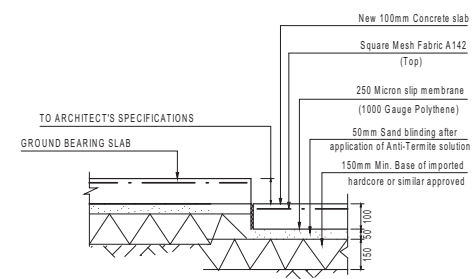
SECTION 1-1



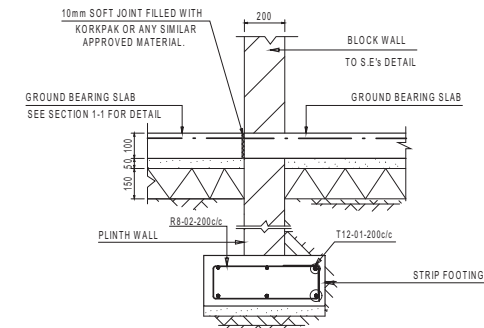
PLAN
MOVEMENT JOINT DETAIL 'X'



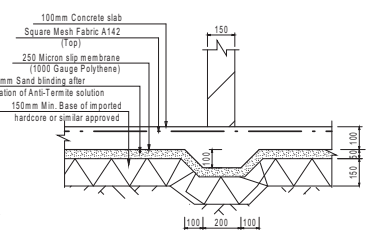
ELEVATION



SECTION THROUGH
TYPICAL GROUND FLOOR STEP

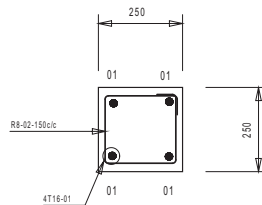


SECTION 5-5

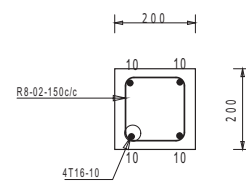


SECTION 6-6

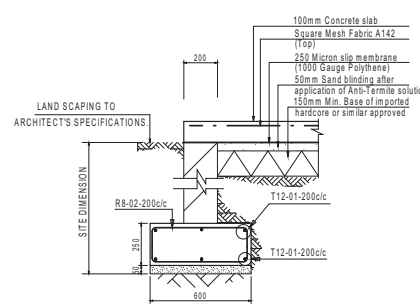
TYPICAL THICKENING DETAIL



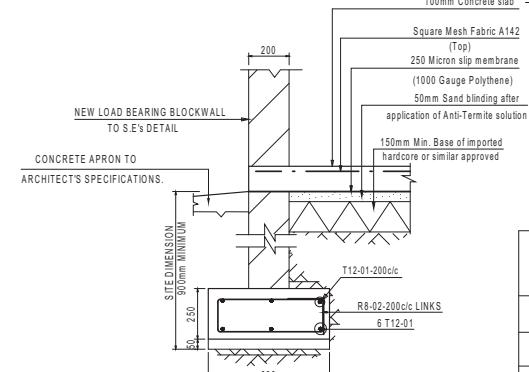
SECTION 1-1
COLUMNS 'C1' (7Nos)



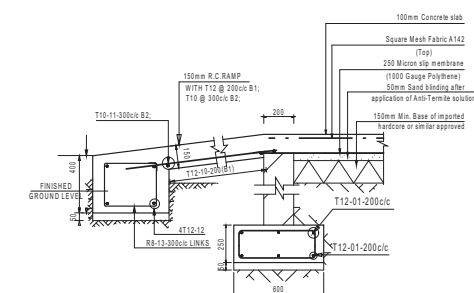
SECTION 8-8
COLUMNS 'C1' (7Nos)



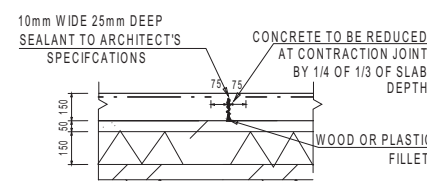
SECTION 4-4



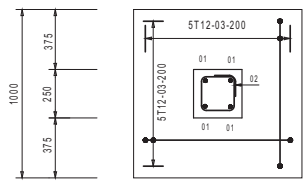
SECTION 2-2



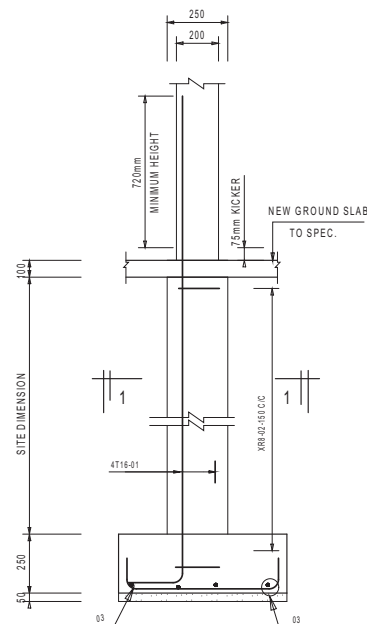
TYPICAL SECTION
GROUND RAMP



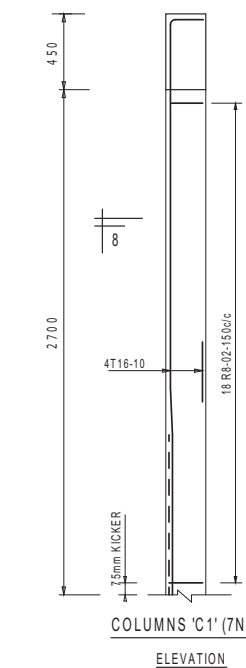
SECTION 3-3
CONTRACTION JOINT DETAIL



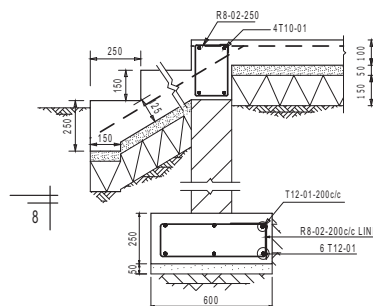
TYPICAL BASE PLAN
COLUMNS 'C1' (7Nos)



TYPICAL BASE ELEVATION
COLUMNS 'C1' (7Nos)



COLUMNS 'C1' (7Nos)
ELEVATION



TYPICAL SECTION
GROUND STEPS DETAIL

GENERAL NOTES

1-REFERENCES

ALL ENGINEER'S DRAWINGS SHALL BE READ IN CONJUNCTION WITH ALL ARCHITECT'S DRAWINGS. ANY DISCREPANCY SHOULD BE REPORTED TO BOTH THE ARCHITECT AND THE ENGINEER.

2-DIMENSIONS

ALL DIMENSIONS ARE IN MILLIMETERS (UNLESS STATED OTHERWISE).

3-FOUNDATIONS

FOUNDATIONS HAVE BEEN DESIGNED ON BEARING PRESSURE OF 150 kN/m². FOUNDATION DEPTH TO BE DETERMINED BY ENGINEER PRIOR TO PLACING CONCRETE. MINIMUM FOUNDATION DEPTH TO BE 100mm BELOW FLOOR LEVEL OR 600mm BELOW SPLASH APRON WHICHEVER IS CRITICAL. MAXIMUM ALLOWABLE FALL BELOW GROUND SLAB + 500mm.

4-BLOCKWORK

ALL LOAD BEARING BLOCK WALLS TO BE CONSTRUCTED FROM SOLID BLOCK OF 5.0N/m² MIN. CHARACTERISTIC COMPRESSION STRENGTH COMPLYING WITH BS 5628 PART 1 1978 STRUCTURAL USE OF UNREINFORCED MASONRY.

MORTAR TO CONFORM TO MORTAR DESIGNATION (III) OF TABLE 1 BS 5628 PART 1.

5-CONCRETE

PROPOSED USE	GRADE	PERMITTED TYPE AGGREGATE		MAX. SIZE	WORKABILITY
		COARSE	FINE		
REINFORCED CONC. (INCLUDING GROUND BEARING SLAB)	C 30	BS 882	BS 882	20mm	MEDIUM (75)
CONCRETE CONTAINING NO EMBEDDED METAL	C 15	BS 882	BS 882	40mm	MEDIUM (75)
BLINDING CONCRETE	C 7.5	BS 882	BS 882	20mm	MEDIUM (75)
CONCRETE IN MINOR ELEMENTS eg LINTELS	C 25	BS 882	BS 882	10mm	MEDIUM (75)

6-COVER

LOCATION	COVER
TO MESH IN GROUND SLAB	30mm
COLUMNS (COVER TO LINKS)	20mm
SLAB COVER TO MAIN BARS	20mm
FOUNDATIONS TOP AND BOTTOM SIDES	40mm
	75mm

7-JOINTS

MOVEMENT JOINTS TO BE AT A MAXIMUM 9.0m CENTRES. JOINT POSITIONS AS INDICATED ON DRG. JOINT IN SLAB TO BE CARRIED THROUGH WALLS TO UNDERSIDE OF RINGBEAM.

8-WALL TIES

PROVIDE MASONRY ANCHORS EVERY 2 COURSES USING GALVANISED MILD STEEL DEBOND TIES TO BS 1243:1978.

9-REINFORCEMENT

REINFORCEMENT TO BE IN ACCORDANCE WITH CONSULTING ENGINEER'S SPECIFICATIONS.
 8----- DENOTES ROUND MILD STEEL BARS.
 T----- DENOTES HIGH YIELD BOND STRENGTH BARS.

FOR COSTING

mark	revision	date	by

ARCHITECT
CREATIONS CONSULT
AFRICA LTD.

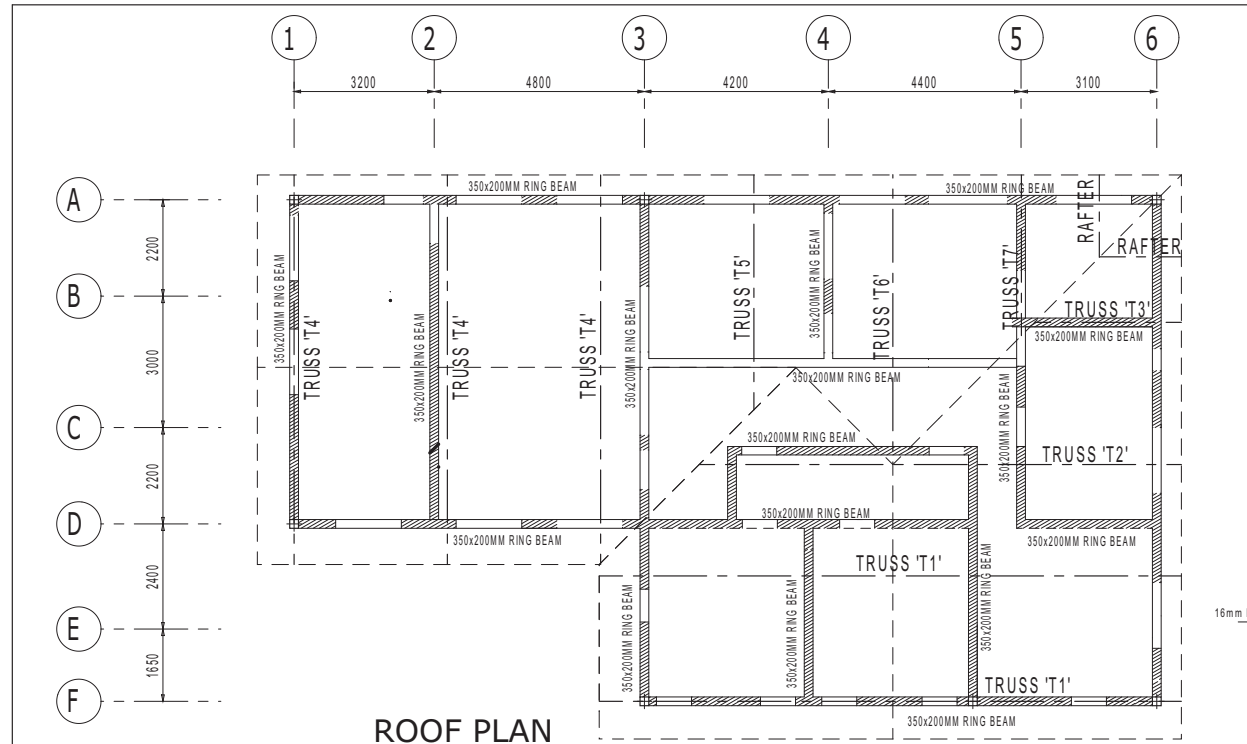
Plot 2D, NAKASERO HILL ROAD, KAMPALA
UGANDA-Tel 0414-232717 FAX 0414-232719

SAMPAR LTD
CONSULTING ENGINEERS
TEL : (041) 250 118/251 171
P.O. BOX 10608, WANKOLO
FAX : (041) 250 383
EMAIL: sampar@mul.com KAMPALA, UGANDA.

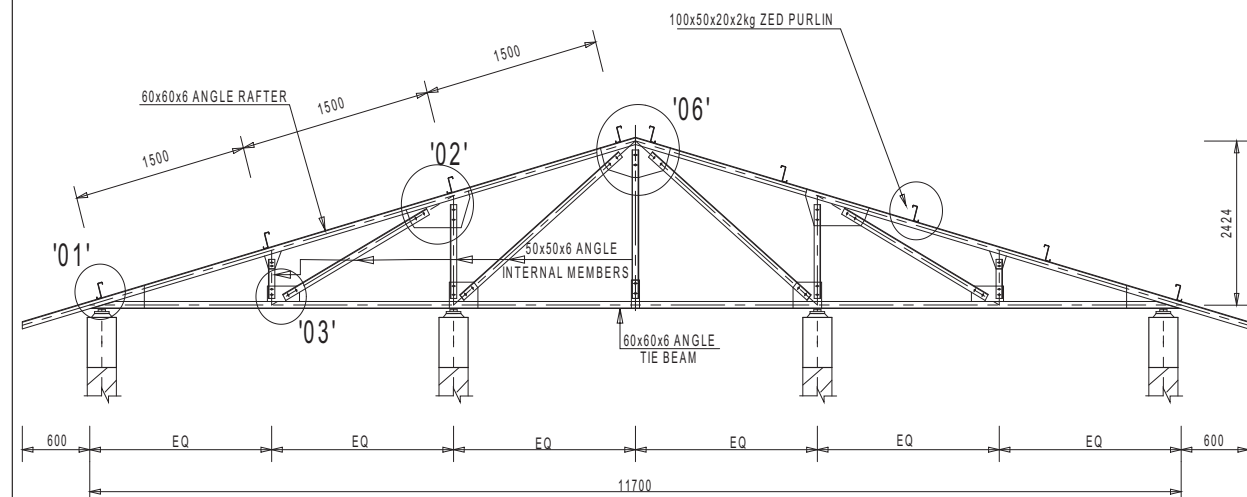
CLIENT: GOVERNMENT OF THE REPUBLIC OF UGANDA
MINISTRY OF HEALTH
P. O. BOX 7272, KAMPALA

job: MODIFICATION DRAWINGS FOR
STANDARD HEALTH CENTRE IV
THEATRE BLOCK
GROUND FLOOR GA, FOUNDATION DETAILS,
BASE & COLUMN REINFT DETAILS

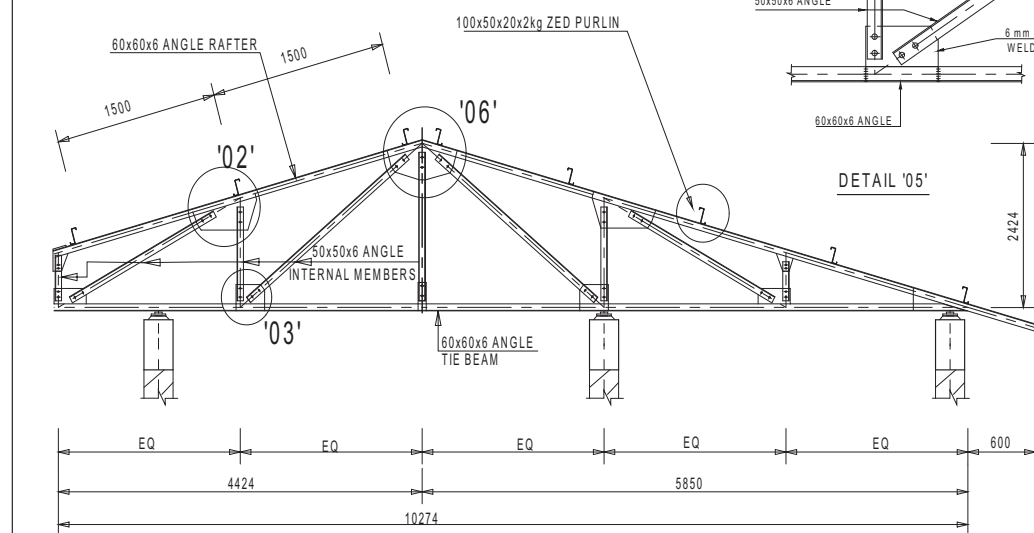
drawn: FA scale: 1:100, 1:50, 1:20, 1:10 job no.: drg. no.: revision:
checked: date: AUG. 2012 U/509/HCIV F/01
passed:



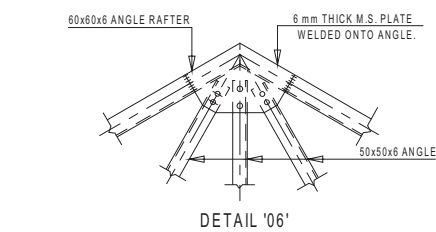
ROOF PLAN



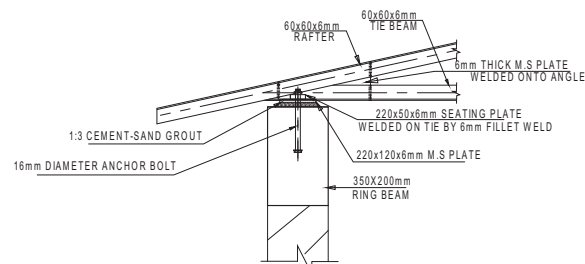
TRUSS 'T1' (2No.s)



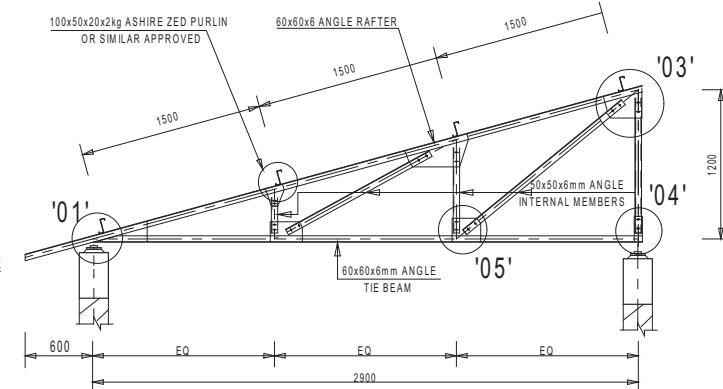
TRUSS 'T2' (1No.s)



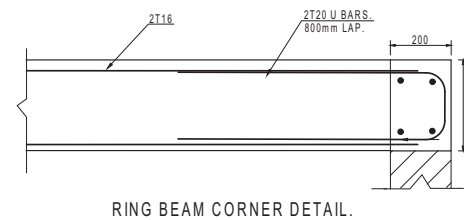
DETAIL '06'



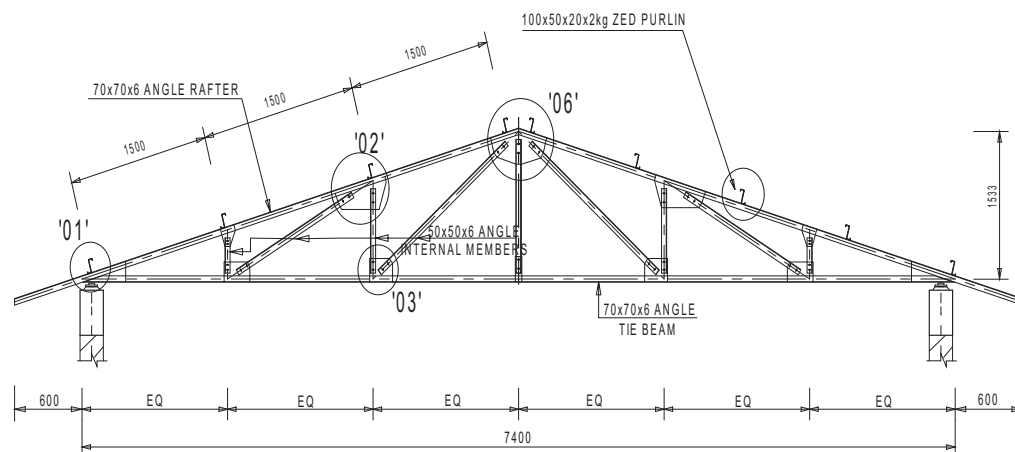
DETAIL '01'



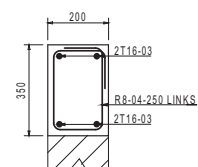
TRUSS 'T3' (1No.s)



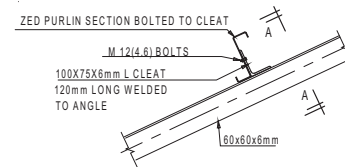
RING BEAM CORNER DETAIL.



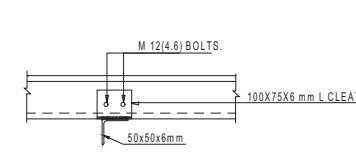
TRUSS 'T4' (3No.s)



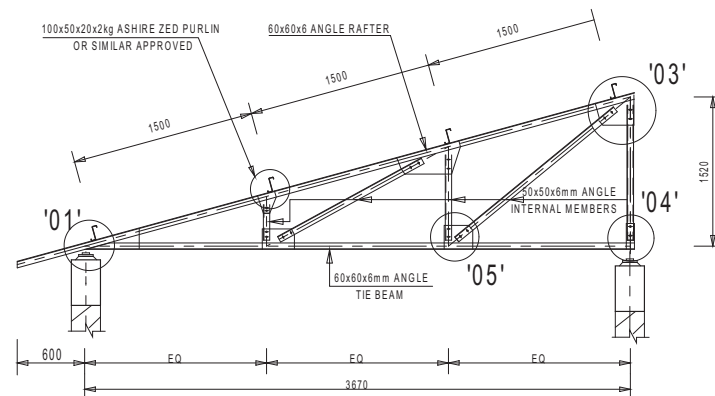
TYPICAL SECTION
RING BEAM DETAIL.



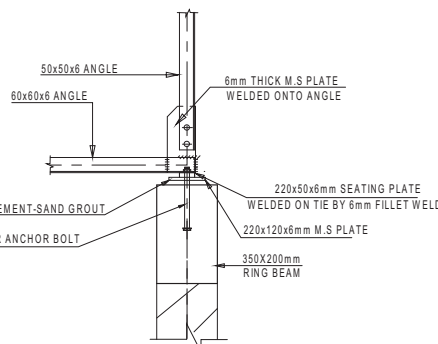
ELEVATION



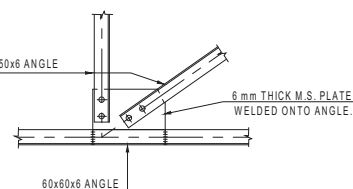
SECTION ELEVATION A-A



TRUSS 'T7' (1No.s)



DETAIL '04'



DETAIL '05'

GENERAL NOTES

1- REFERENCES

THIS DRAWING SHALL BE READ IN CONJUNCTION WITH DRG. No.s U/36/108 & 04, AND ALL RELEVANT ARCHITECT'S DRAWINGS. ANY DISCREPANCY SHOULD BE REPORTED TO BOTH THE ARCHITECT AND THE ENGINEER.

2- DIMENSIONS

ALL DIMENSIONS ARE IN MILLIMETERS (UNLESS STATED OTHERWISE).

3- STEEL WORK

ALL STEELWORK IS DESIGNED IN ACCORDANCE WITH BS 5950: PART 1: 1990 'STRUCTURAL USE OF STEELWORK IN BUILDINGS'. ALL STRUCTURAL STEEL TO BE GRADE 43 TO BS 4360 UNLESS STATED OTHERWISE.

4- WELDS

WELDING SHALL BE A METAL ARC PROCESS IN ACCORDANCE WITH BS 5135 AND BS 4570 AS APPROPRIATE. ALL FILLET WELDS SHALL BE 6mm MINIMUM. CONTINUOUS ON ALL SIDES BY WELDERS APPROVED TO BS 4872: PART 1.

5- BOLTS

ALL BOLTS TO BE GRADE 4.6. ORDINARY BOLTS OF 16mm DIAMETER TO BE USED.

6- CONNECTIONS

ALL CONNECTIONS SHALL BE DESIGNED AND DETAILED BY THE FABRICATOR. FABRICATION DRAWINGS TO BE PREPARED BY THE FABRICATOR AND SUBMITTED TO THE ENGINEER FOR APPROVAL PRIOR TO FABRICATION/ERECTION.

9- CONCRETE

PROPOSED USE	GRADE	PERMITTED TYPE AGGREGATE	MAX. SIZE AGG.	WORKABILITY
REINFORCED CONCRETE	C 30	BS 882 COARSE BS 882 FINE	20mm	MEDIUM (75)

COVER

LOCATION	COVER
RING BEAM COVER TO LINKS	25mm

10- REINFORCEMENT

REINFORCEMENT TO BE IN ACCORDANCE WITH CONSULTING ENGINEER'S SPECIFICATIONS.

R----- DENOTES ROUND MILD STEEL BARS.

T----- DENOTES HIGH YIELD BOND STRENGTH BARS.

LAP LENGTHS: T12 - 600mm MIN.

T16 - 800mm MIN.

11- LOADING DATA

IMPOSED LOAD ON ROOF= 0.25kN/m².

FOR COSTING

mark	revision	date	by

ARCHITECT
CREATIONS CONSULT AFRICA LTD.
Plot 2D, NAKASERO HILL ROAD, KAMPALA
UGANDA-Tel 0414-232717 FAX 0414-232719

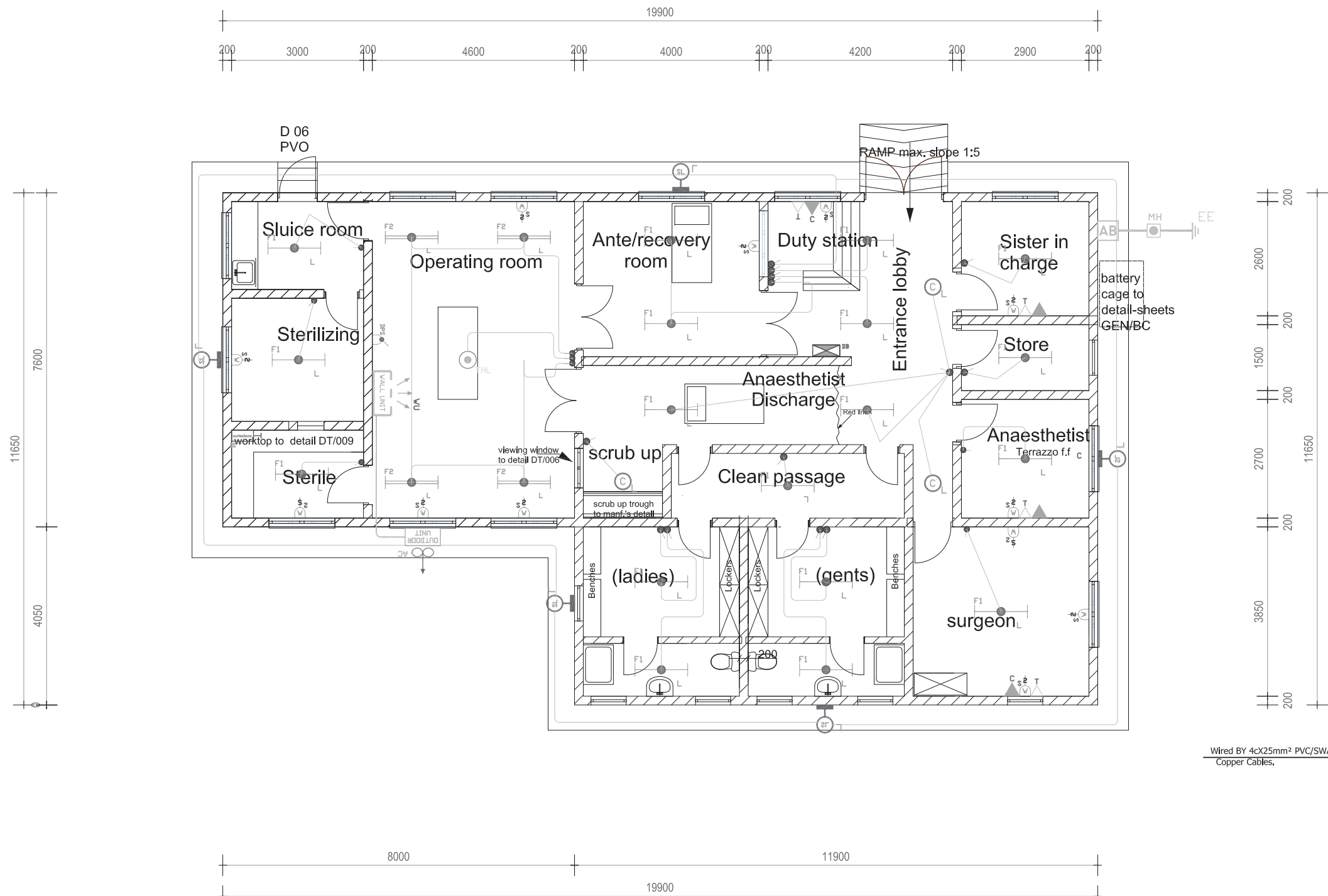
ENGINEER:
SAMPAR LTD
CONSULTING ENGINEERS
TEL : (041) 250 118/251 171 PLOT 1-5 SPRING CLOSE
FAX : (041) 250 383 WANKOKO
EMAIL: sampar@imul.com P.O. BOX 10608
KAMPALA, UGANDA.

CLIENT:
**GOVERNMENT OF THE REPUBLIC OF UGANDA
MINISTRY OF HEALTH
P. O. BOX 7272, KAMPALA**

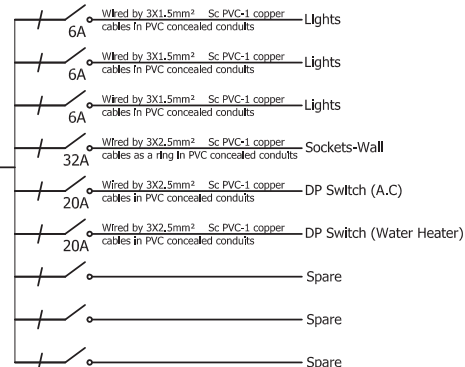
job :
**MODIFICATION DRAWINGS FOR KITWE
HEALTH CENTRE IV**

title :
**THEATRE BLOCK
ROOF GA & TRUSS DETAILS**

drawn : F.A scale: 1:100, 1:50, 1:20, 1:10 job no.:
checked : date: OCT. 2011 U/509/HCV F/02
passed :



SYMBOL	DESCRIPTION
F1	T5 1x28W, 1200mm fluorescent Bare batten lighting fitting with electronic control gear as HAVELL'S or CLIPSAL or THORN or equal approved
L	Security bulbhead with cast aluminium body with glass lens and aluminium louver with 1x26W CFL lamp to IP44, as PIERLITE, AL 236 or equal approved
C	Pendant (Ceiling Rose, flex, lamp holder, lamp) 18W CFL
2	13A two Gang switched Socket outlet on trunking.
2	13A two Gang switched Socket outlet on wall.
▲	COMPUTER POINT.
R345	Telephone Point.
CDP	6kg Carbon dioxide type, wall mounted fire extinguisher as ANGUS C56HHT, or equal approved
FFP	9kg Monoammonium phosphate Grade IAB dry powder type, cartridge operated, wall mounted fire extinguisher as ANGUS, or equal approved
-----	3 Section PVC Trunking overall section 167 x 50mm as marsh-buffex sterling trunking profile 2 or equal approved complete with couplers, end cap, internal/external bends, upward/down ward flat tees and all accessories.
1	1 Gang 2way switch.
1	1 Gang 1way switch.
2	2 Gang 1way switch.
DB	Distribution board.
CU	Consumer Unit
AB	Adaptable box
PC	Photo cell
CCU	Cooker Control Unit
F1	T5 1x18W, 600mm Bare batten fluorescent lighting fitting with electronic control gear as HAVELL'S or CLIPSAL or THORN or equal approved.
F1	T5 2x28W, 1200mm fluorescent Bare batten lighting fitting with electronic control gear as HAVELL'S or CLIPSAL or THORN or equal approved
STL	Surgical Theater Lighting fitting to engineer's approval.
AC	Air Conditioning Indoor Wall Unit.
AO	Air Conditioning Outdoor Unit.
SP	Double pole switch.
WH	Water Heater.



100A, 9- WAY SPN MCB FLUSH CONSUMER'S UNIT (CU-1)- THEATER

GROUND FLOOR PLAN

HC IV THEATRE 1:100

PROJECT MANAGERS

CreationsConsult
africa ltd
architects • engineers • project managers
PLOT 2B NAKASERO HILL ROAD,
KAMPALA
TEL: 0414-232717, FAX: 0414-232719
e-mail: frontdesk@creationsconsult.org
www.creationsconsult.org

MECHANICAL AND ELECTRICAL ENGINEERS



M & E ASSOCIATES
CONSULTING ENGINEERS
ROFRA HOUSE, GABA ROAD
P. O. BOX 4052
KAMPALA, UGANDA
TEL 501894, FAX 501893
email: meassoc@utonline.co.ug

Notes	Date	Sign

Notes
1. All Dimensions are in millimeters unless stated otherwise.
2. Do not scale the drawings. In case of any discrepancy, consult the Architect.
3. All External Walls are 230mm, including plaster.
4. Refer to notes for finishes and details.
5. These Drawings are to be read in conjunction with other specialists drawings.

CONTRACT
CONSULTANCY SERVICES FOR THE
REVIEW OF STANDARD DESIGNS
FOR HEALTH FACILITIES

Job Title:
STANDARD DRAWINGS FOR HEALTH
CENTRE IV

Drawing Title:
HC IV - THEATRE : ELECTRICAL INSTALLATIONS :
POWER SUPPLY AND LIGHTING

Drawn By:
TMU

Date:
June-2011

Checked by:
S.S.S

Date:
June-2011

Layout ID
MEA613/STD/1.1

Status

Revision

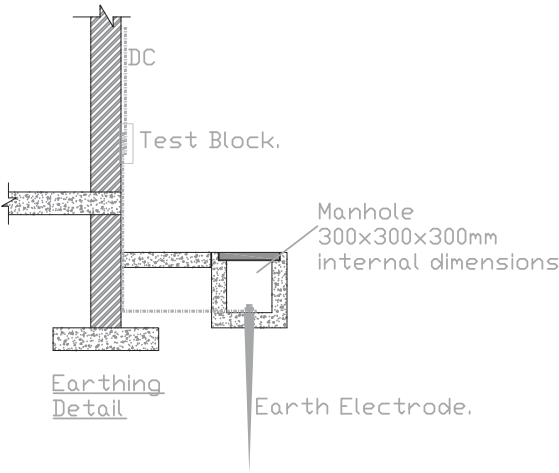
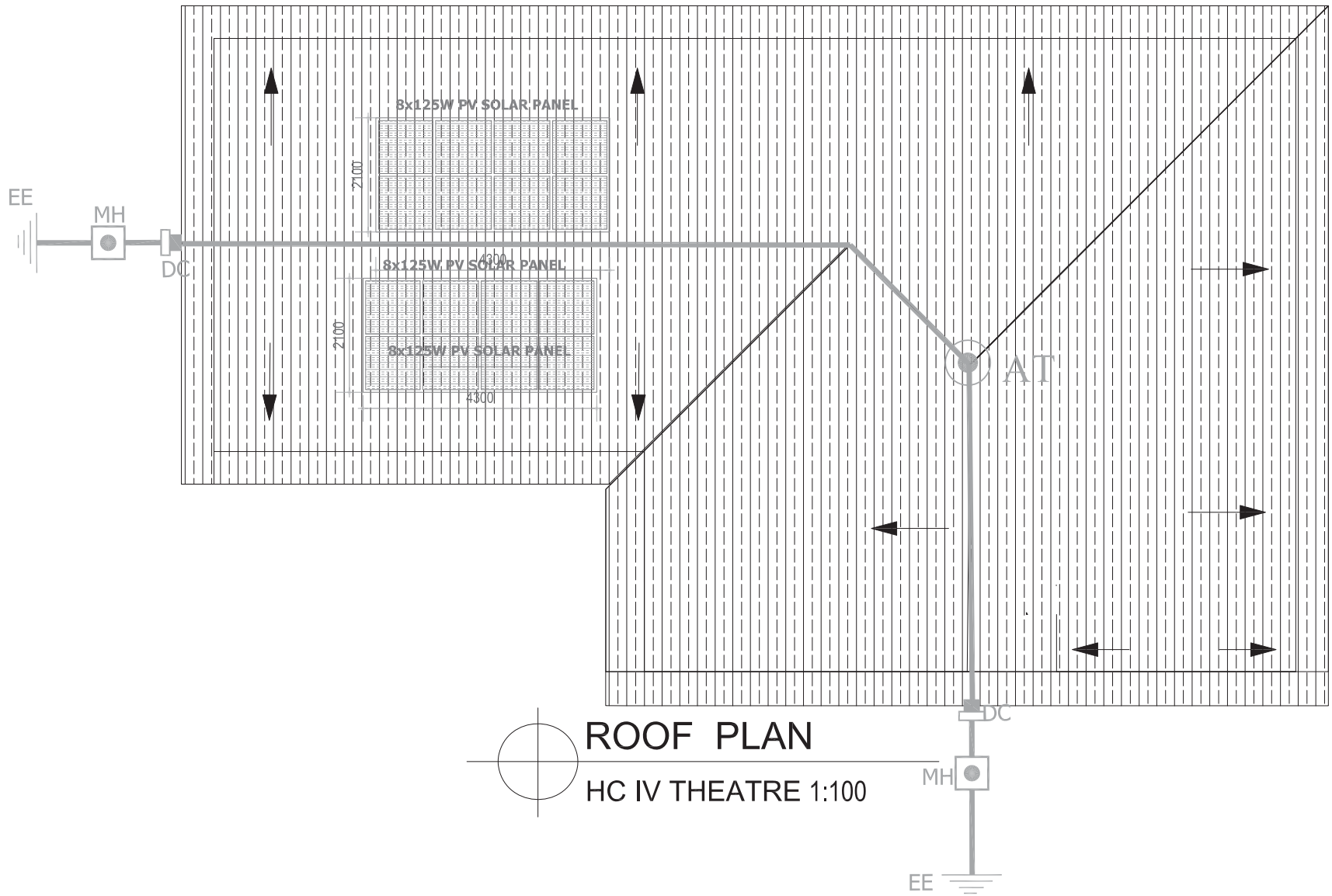
Drawing Scale:
1:100

Serial No:
01

SCHEME DESIGN
JUNE 2011

LEGEND

⊙AT	AIR TERMINAL
▢TB	TEST BLOCK
⊙MH	INSPECTION MANHOLE
≡EE	EARTH ELECTRODE
HC	HORIZONTAL CONDUCTOR COPPER TAPE 3x25mm
DC	DOWN CONDUCTOR COPPER TAPE 3x25mm



ROOF PLAN
HC IV THEATRE 1:100

PROJECT MANAGERS

CreationsConsult
africaitd
architects • engineers • project managers
PLOT 2B NAKASERO HILL ROAD,
KAMPALA
TEL: 0414-232717, FAX: 0414-232719
e-mail: frontdesk@creationsconsult.org
www.creationsconsult.org

MECHANICAL AND ELECTRICAL ENGINEERS

M&E
M & E ASSOCIATES
CONSULTING ENGINEERS
ROFRA HOUSE, GABA ROAD
P. O. BOX 4052
KAMPALA, UGANDA
TEL 501894, FAX 501893
email: meassoc@utonline.co.ug

Notes	Date	Sign

Notes
1. All Dimensions are in millimeters unless stated otherwise.
2. Do not scale the drawings. In case of any discrepancy, consult the Architect.
3. All External Walls are 230mm, including plaster.
4. Refer to notes for finishes and details.
5. These Drawings are to be read in conjunction with other specialists drawings.

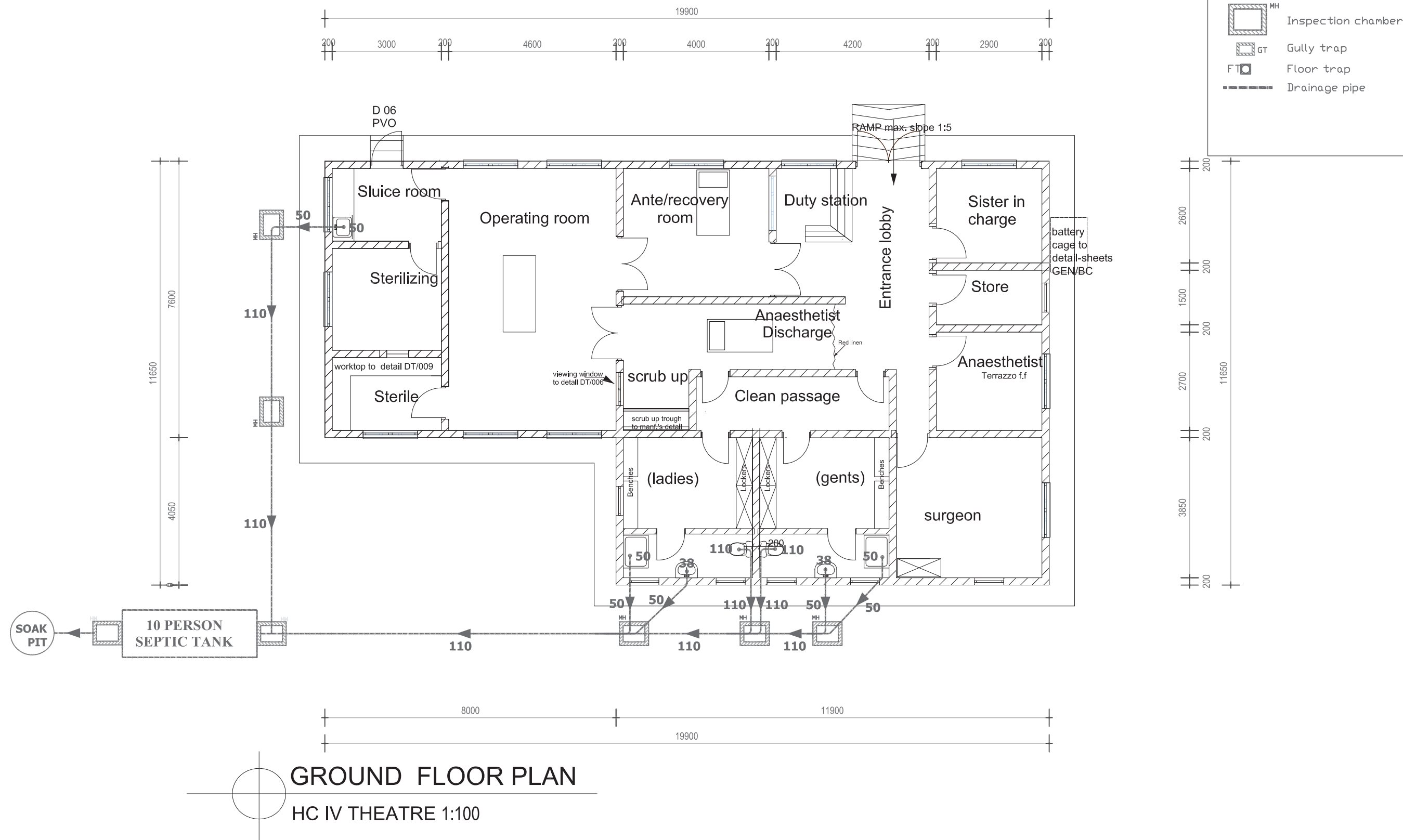
CONTRACT
CONSULTANCY SERVICES FOR THE
REVIEW OF STANDARD DESIGNS
FOR HEALTH FACILITIES

Job Title:
STANDARD DRAWINGS FOR HEALTH
CENTRE IV

Drawing Title:
HC IV - THEATRE BLOCK : ELECTRICAL INSTALLATIONS :
LIGHTNING PROTECTION.

Drawn By: TMU	Date: June-2011
Checked by: S.S.S	Date: June-2011
Layout ID MEA613/STD/1.2	Status Revision
Drawing Scale: 1:100	Serial No: 02

SCHEME DESIGN
JUNE 2011



PROJECT MANAGERS

CreationsConsult
africa ltd
architects • engineers • project managers
PLOT 2B NAKASERO HILL ROAD,
KAMPALA
TEL: 0414-232717, FAX: 0414-232719
e-mail: frontdesk@creationsconsult.org
www.creationsconsult.org

MECHANICAL AND ELECTRICAL ENGINEERS



M & E ASSOCIATES
CONSULTING ENGINEERS
ROFRA HOUSE, GABA ROAD
P. O. BOX 4052
KAMPALA, UGANDA
TEL 501894, FAX 501893
email: meassoc@utonline.co.ug

Notes	Date	Sign

Notes

1. All Dimensions are in millimeters unless stated otherwise.
2. Do not scale the drawings. In case of any discrepancy, consult the Architect.
3. All External Walls are 230mm, including plaster.
4. Refer to notes for finishes and details.
5. These Drawings are to be read in conjunction with other specialists drawings.

CONTRACT

CONSULTANCY SERVICES FOR THE
REVIEW OF STANDARD DESIGNS
FOR HEALTH FACILITIES

Job Title:

MODIFICATION DRAWINGS FOR HEALTH
CENTRE IV

Drawing Title:

HC IV - THEATRE BLOCK: MECHANICAL
INSTALLATIONS: FOUL WATER DRAINAGE.

Drawn by:
TMU

Date:
June-2011

Checked by:
S.S.S

Date:
June-2011

Layout ID
MEA613/STD/1.3

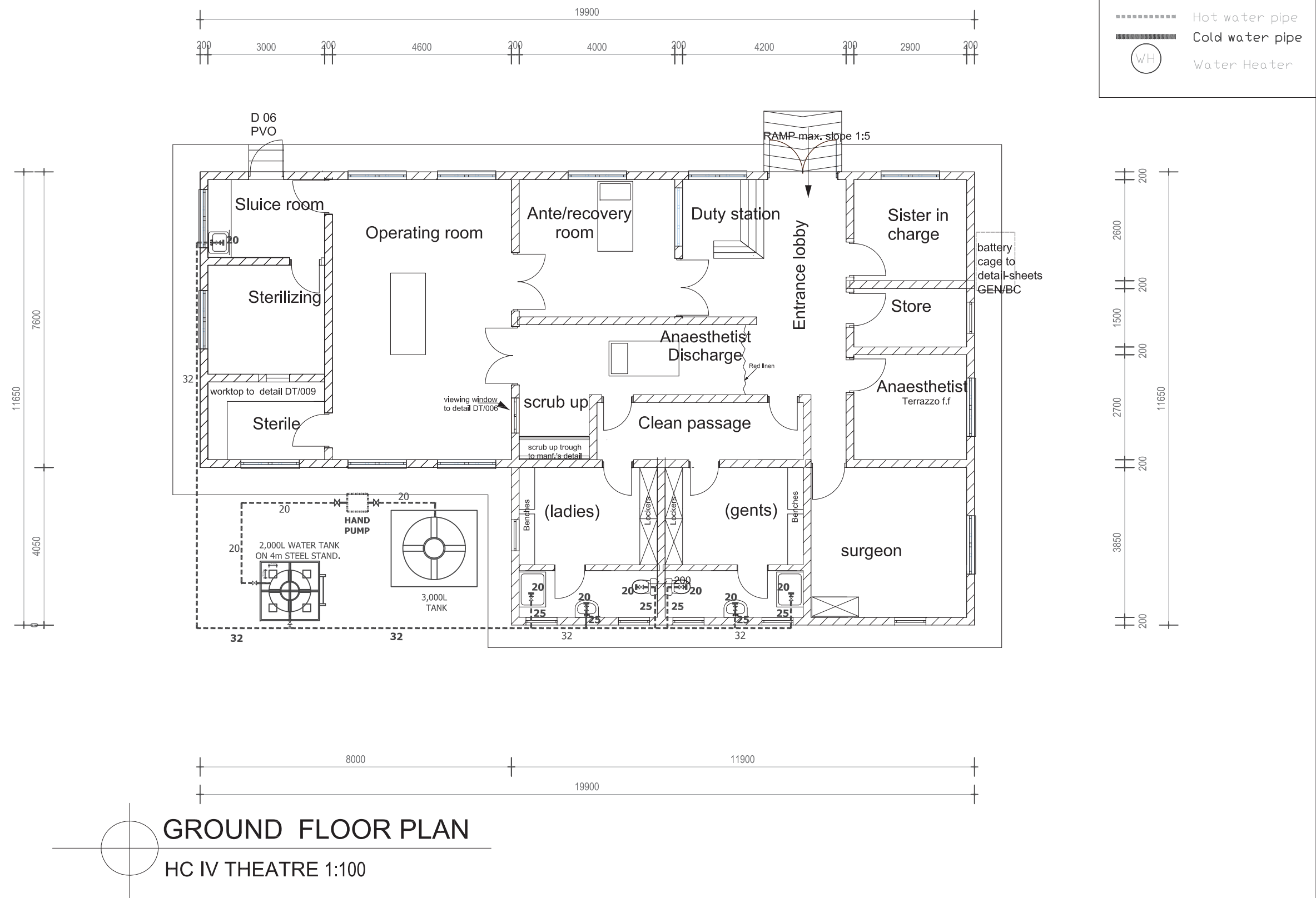
Status

Revision

Drawing Scale:
1:100

SERIAL No
03

SCHEME DESIGN
JUNE 2011



PROJECT MANAGERS

CreationsConsult
africaitd
architects • engineers • project managers
PLOT 2B NAKASERO HILL ROAD,
KAMPALA
TEL: 0414-232717, FAX: 0414-232719
e-mail: frontdesk@creationsconsult.org
www.creationsconsult.org

MECHANICAL AND ELECTRICAL ENGINEERS

M&E
M & E ASSOCIATES
CONSULTING ENGINEERS
ROFRA HOUSE, GABA ROAD
P. O. BOX 4052
KAMPALA, UGANDA
TEL 501894, FAX 501893
email: meassoc@utlonline.co.ug

Notes	Date	Sign

Notes

1. All Dimensions are in millimeters unless stated otherwise.
2. Do not scale the drawings. In case of any discrepancy, consult the Architect.
3. All External Walls are 230mm, including plaster.
4. Refer to notes for finishes and details.
5. These Drawings are to be read in conjunction with other specialists drawings.

CONTRACT
CONSULTANCY SERVICES FOR THE
REVIEW OF STANDARD DESIGNS
FOR HEALTH FACILITIES

Job Title:
MODIFICATION DRAWINGS FOR HEALTH
CENTRE IV.

Drawing Title:
HCIV-THEATRE BLOCK - MECHANICAL INSTALLATIONS:
PLUMBING AND WATER SUPPLY.

Drawn by:
TM

Date:
June-2011

Checked by:
S.S.S

Date:
June-2011

Layout ID
MEA613/STD/1.4

Status

Revision

Drawing Scale:
1:100

SERIAL No
04

SCHEME DESIGN
JUNE 2011